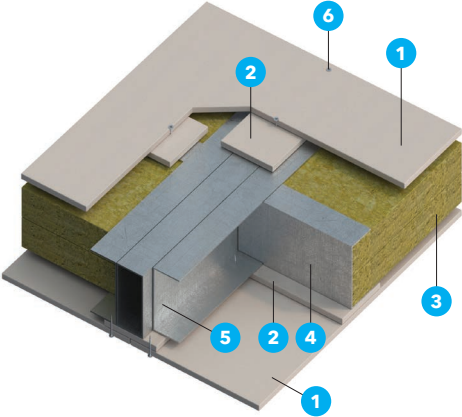
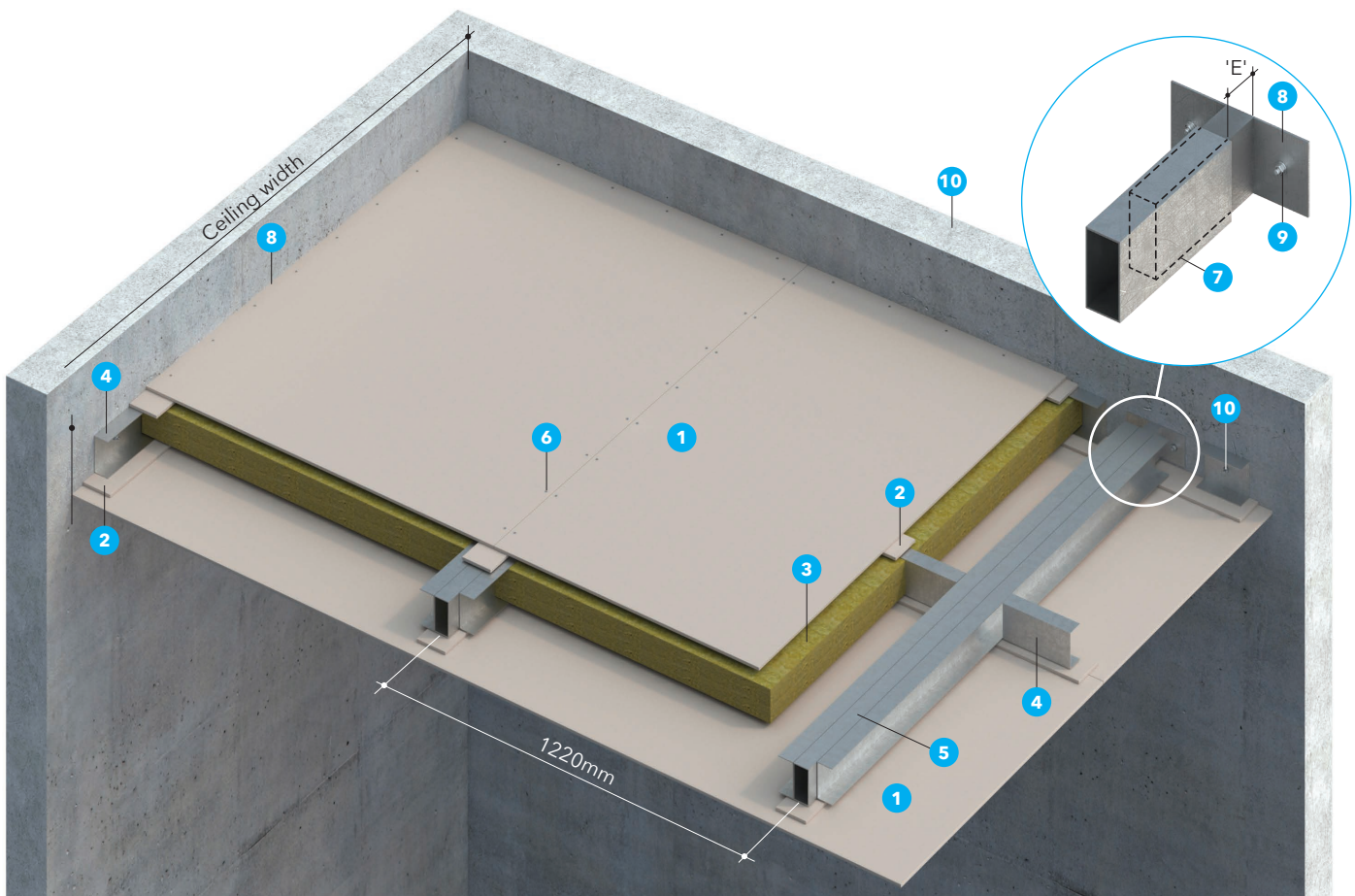


PROMATECT®-H 1 & 2-hour fire rated self-supporting ceiling membrane (Type 2)



Fire Resistance	FRL	-/60/60 -/120/120	Model number: PH.14.60 Model number: PH.14.12
	Standard	BS 476: Part 22: 1987 (Non loadbearing)	
Acoustic	STC	48	
	Rw	47dB	Margin of error is generally within ±3dB, depending on cavity depth
	Standard	ASTM E492, E413 ISO 717: Part 1: 1996	



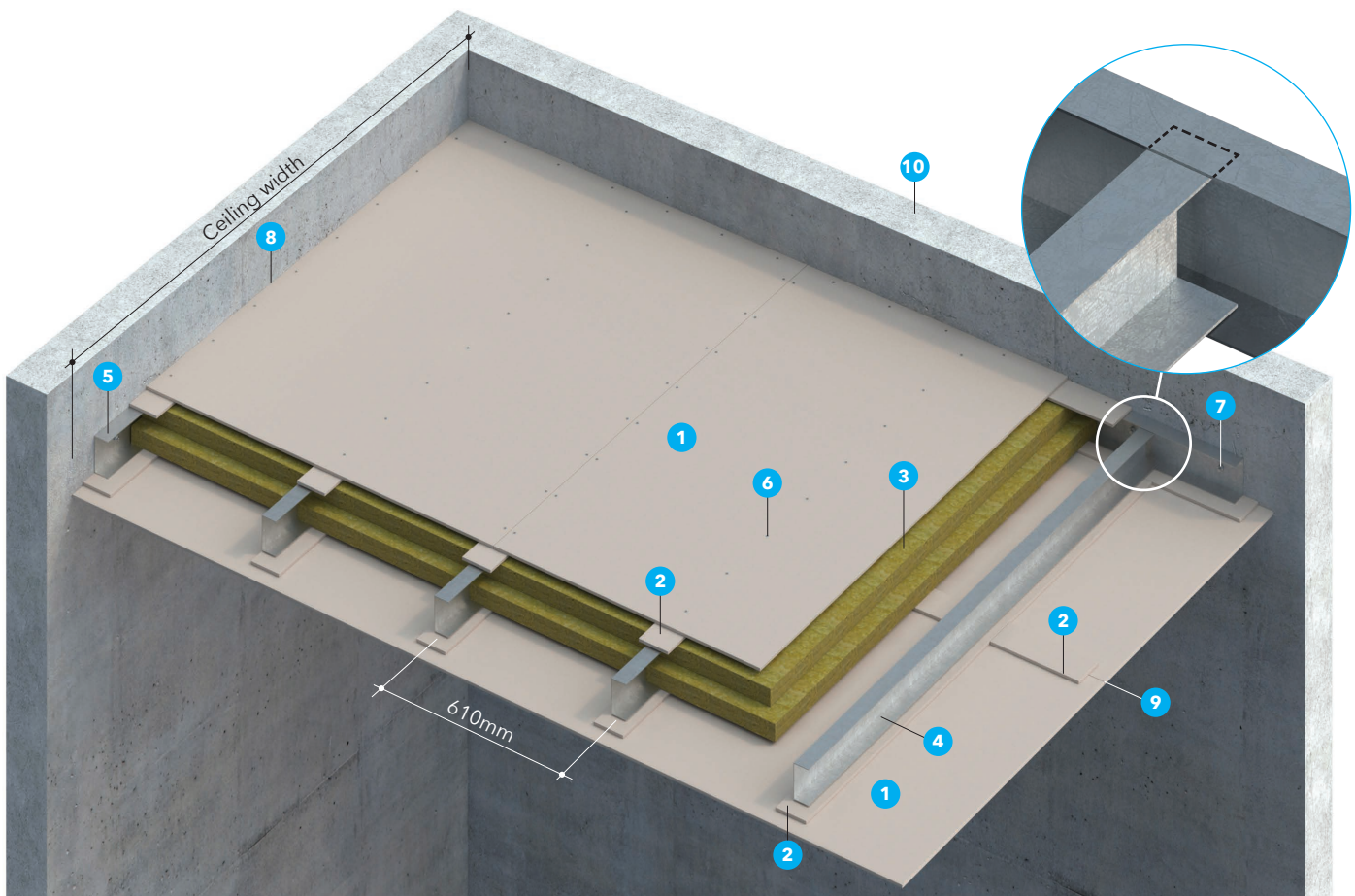
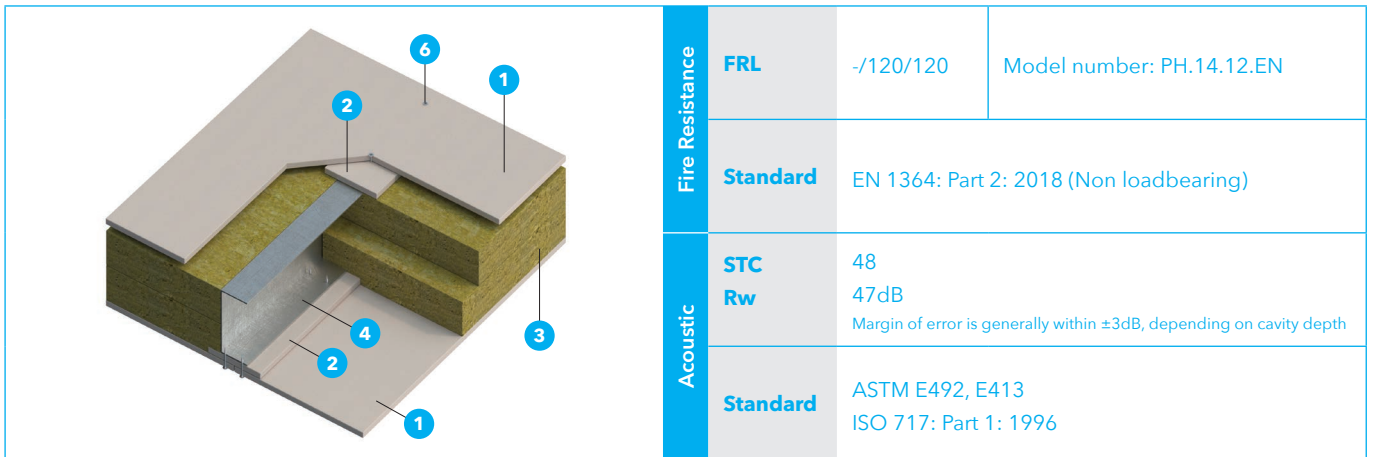
1. One layer of PROMATECT®-H 9mm thick.
2. PROMATECT®-H cover strips 100mm wide x 9mm thick.
3. Mineral wool (staggered joints min 300mm between layers):
1 hour: 50mm x 40kg/m³
2 hour: 80mm x 100kg/m³ or 100mm x 80kg/m³
4. Intermediate steel channel at 610mm centres
1 hour - U50 x 50 x 0.6mm thick
2 hour - U100 x 50 x 0.6mm thick
5. Main support RHS 100 x 50 x 2.3mm at max. 1220mm centres for ceiling width up to 3m.
6. M4 self-tapping screws at 200mm centres.
7. RHS bracket fully welded to note 8.

8. Steel plate min 3.0mm thick.
9. M 12 anchor bolts to fix note 8.
10. M6 anchor bolts at 600mm centres.
11. Masonry wall.

FRL (hour)	Expansion gap 'E'
1	7.4mm/m
2	9.0mm/m

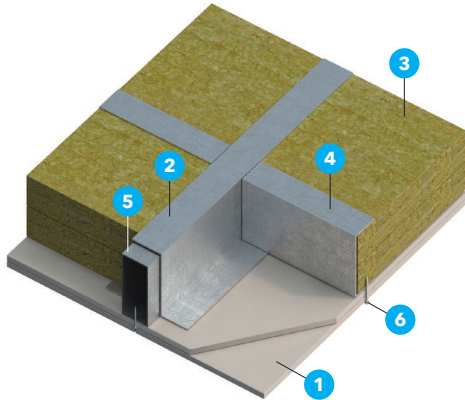
Note: Please consult Promat for ceiling's width larger than 3m.

PROMATECT®-H 2-hour fire rated self-supporting membrane ceilings

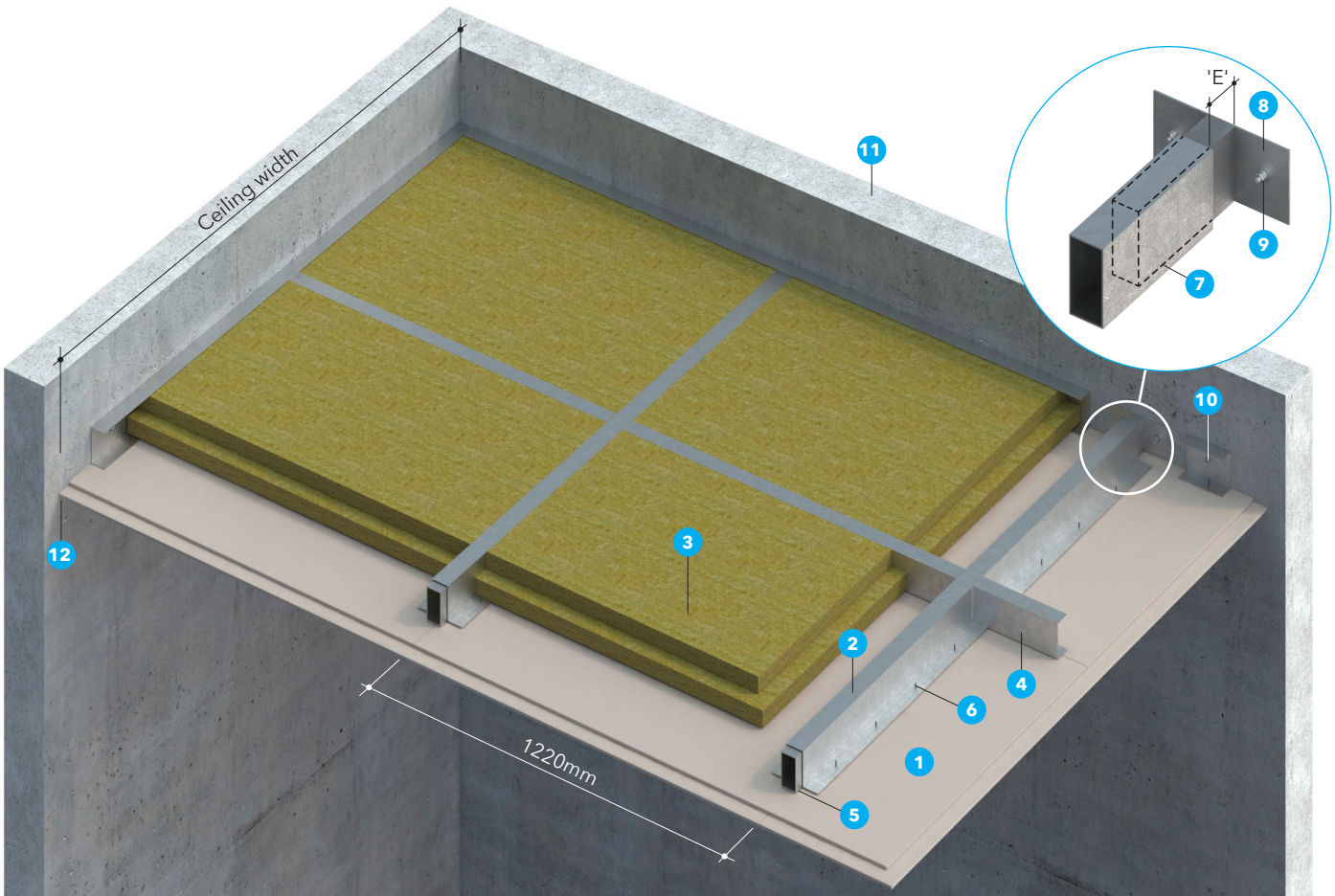


1. One layer of PROMATECT®-H 9mm thick.
 2. PROMATECT®-H cover strips 100mm wide x 9mm thick.
 3. Mineral wool 2 x 50mm x 100kg/m³ (staggered joints min. 300mm between layers):
 4. Steel channel 125 x 50 x 1.5mm thick at 610mm centres.
 5. Steel perimeter channel support 130 x 50 x 1.5mm thick.
 6. No.8 self-tapping screw fixed at 200mm centres on facing board and at 500mm on cover strip to purlins.
 7. M8 expansion bolts at 600mm centres.
 8. PROMASEAL®-A Acrylic Sealant to seal gaps on irregularities surface.
 9. Transverse board joint.
 10. Masonry wall.
- Note: Please consult Promat for ceiling's width larger than 3.4m.

PROMATECT®-H 1 & 2-hour fire rated self-supporting membrane ceilings



Fire Resistance	FRL	-/60/60 -/120/120	Model number: PH.14.60-A Model number: PH.14.12-A
	Standard	BS 476: Part 22: 1987 (Non loadbearing)	
Acoustic	STC	32	
	Rw	33dB	Margin of error is generally within ±3dB, depending on cavity depth
	Standard	ASTM E492, E413 ISO 717: Part 1: 1996	



- Two layers of PROMATECT®-H 9mm thick staggered joints min. 300mm between boards.
- Steel top hat g.s 0.5mm thick.
- Mineral wool (staggered joints min. 300mm between layers):
1 hour: 50mm x 40kg/m³
2 hour: 100mm x 80kg/m³ or 80mm x 100kg/m³
- Intermediate steel channel 0.6mm thick at 610mm centres.
- Main support RHS 100 x 50 x 2.3mm at max. 1220mm centres for ceiling width up to 3m.
- M4 self-tapping screws at 200mm centres.
- RHS bracket fully welded to end plate (note 8).

- Steel plate min 3.0mm thick.
- M12 anchor bolts to fix note 8.
- M6 anchor bolts at 600mm centres.
- Masonry wall.
- PROMASEAL®-A Acrylic Sealant to seal gaps on irregularities surface.

FRL (hour)	Expansion gap 'E'
1	7.4mm/m
2	9.0mm/m

Note: Please consult Promat for ceiling's width larger than 3m.